



# MARIN WILDFIRE PREVENTION AUTHORITY

- Background
- What's Working (In the works)
- Needs
- Momentum



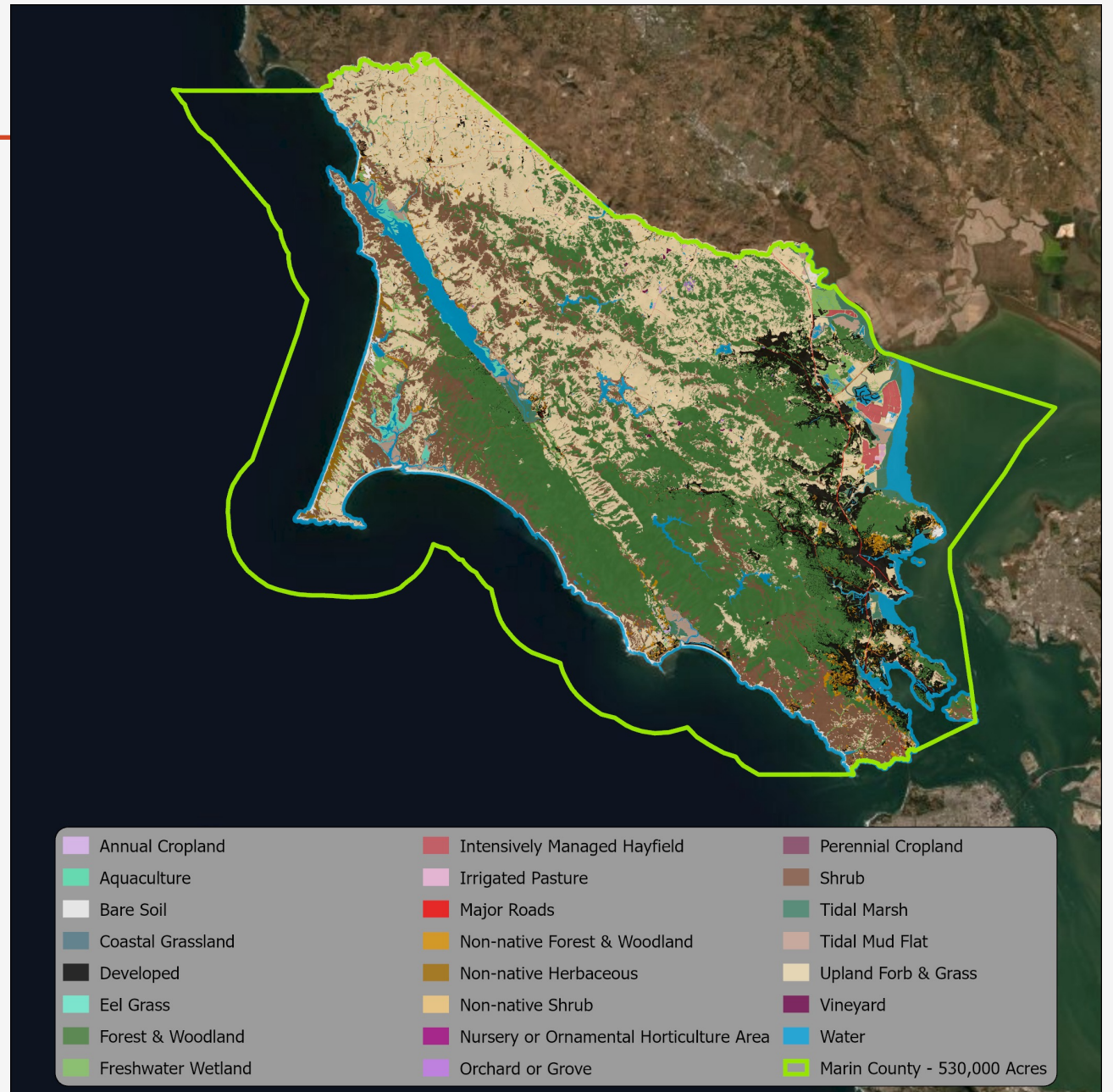
# MARIN WILDFIRE PREVENTION AUTHORITY

- Mark Brown – Introduction
- Executive Officer – Marin Wildfire Prevention Authority
- Retired Deputy Fire Chief – Marin County Fire Department (30 years of service)
- Operations Section Chief – CAL FIRE Incident Management Teams 3 and 4 (15 years)

# Marin Vegetation Profile

---

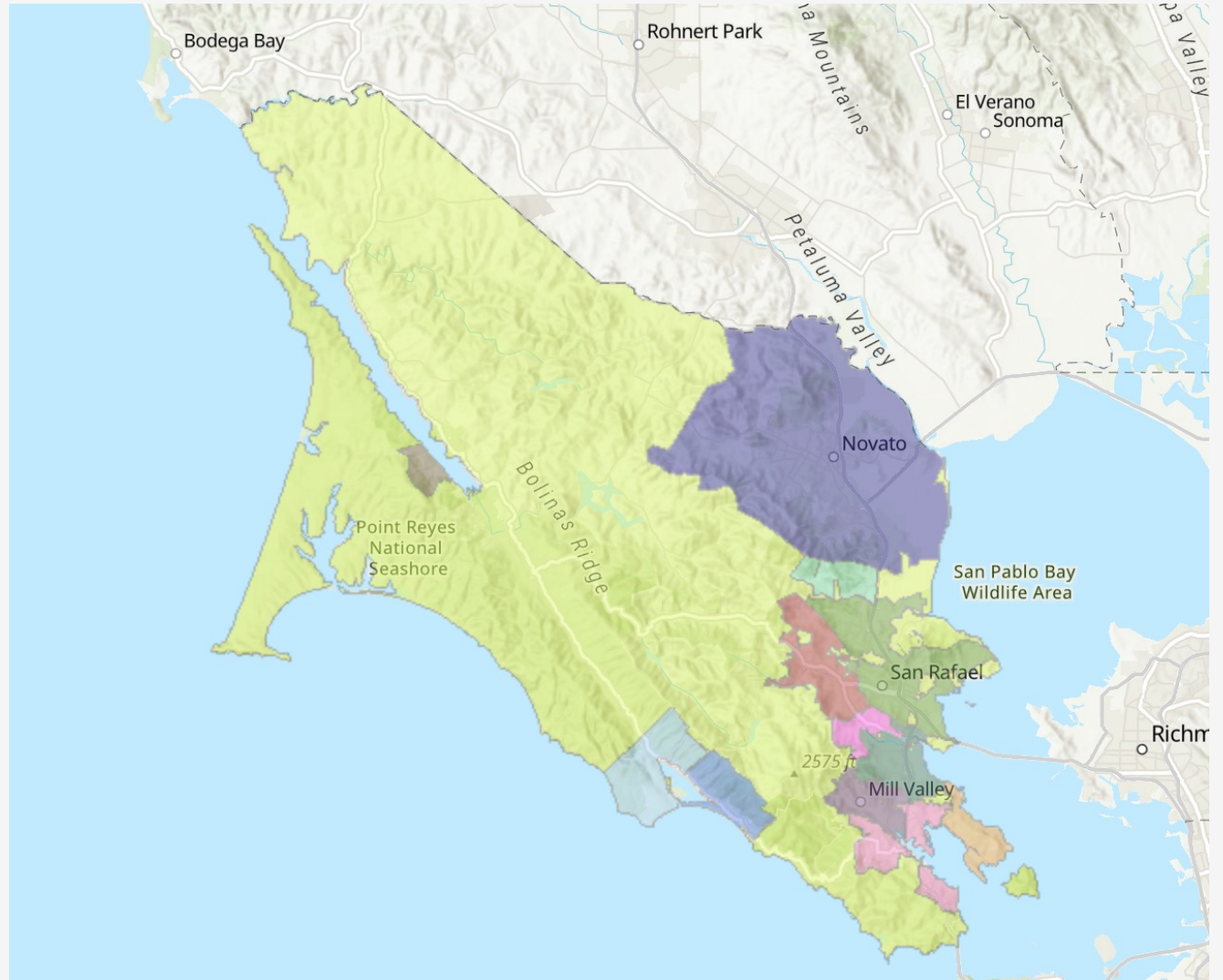
- Mosaic of forest, shrub and grassland vegetation types
- All flammable
- Fire Hazards Exacerbated by SOD, Drought
- **Nearly all communities are within the wildland urban interface**



# Marin Fire Agencies

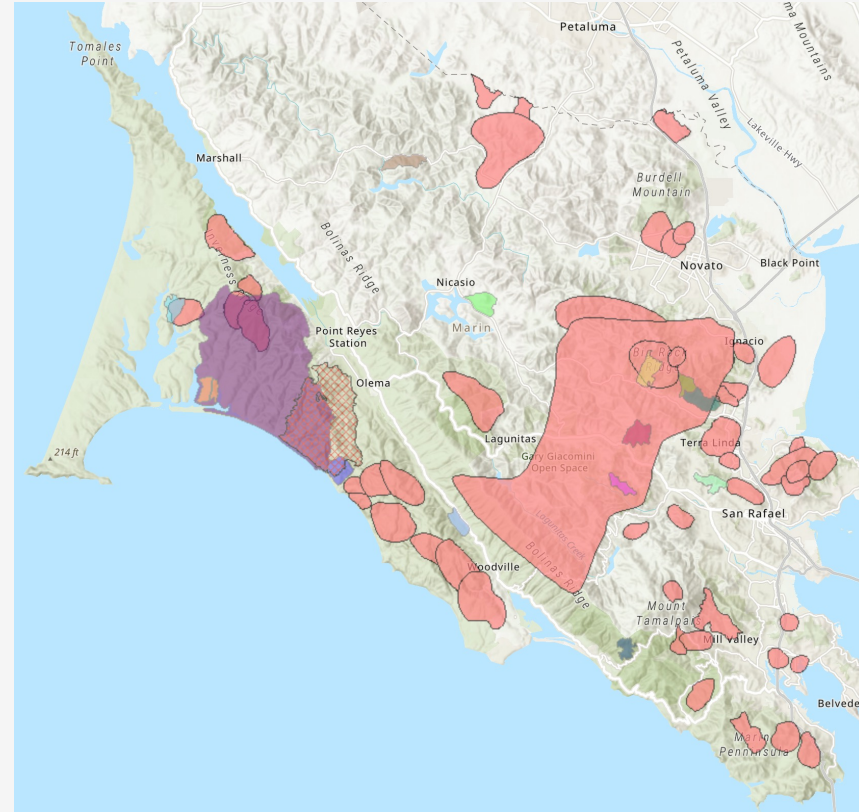
---

- 19 Independent Fire Agencies responsible for Fire Prevention and Suppression
- Fire knows no jurisdictional boundaries
- Compelling need for fire agencies to work together to address common threats, mutual interests



# Fire History of Marin County

- Marin has a significant history of wildfires
- Neighboring communities and counties have been severely damaged by catastrophic fires over the last decade
- Any of our communities could be next. We are all vulnerable



# Marin Wildfire Prevention Authority Context

---

- Air quality throughout the Western US has driven increased concerns and a drive for wildfire prevention.
- The fire sieges over the last several years has set up a sequence of events that led to a tipping point for citizens who are concerned about health and safety.





**MARIN WILDFIRE  
PREVENTION AUTHORITY**

What's Working  
and What's in the Works

# 2017/18 County and Civic Leaders Commission a Fact-Finding Report

---

- Marin County Board of Supervisors commissioned a multidisciplinary team to **identify and report what lessons could be learned from the 2017 North Bay Fire Siege**
- **Collaborative effort by key stakeholders** including the Fire Chiefs, City Managers, County Administrators, County Supervisors and Law Enforcement
- **Key recommendation: Fire Agencies and municipalities need to coalesce under a County wide JPA with ongoing funding to reduce risk of catastrophic event**



## Lessons Learned 2017 North Bay Fire Siege September 2018

Prepared By:  
Marin County Fire Department  
P.O. Box 518, Woodacre, CA 94973  
[www.marincountyfire.org](http://www.marincountyfire.org)





# 2018/19 Civil Grand Jury Recommends Formation of Wildfire Prevention JPA

---

- Civil Grand Jury Report\* Affirmed Findings & Recommendations of Lessons Learned Report
- Recommended the formation of a County Wildfire Prevention Agency, suggested sources of funding, and that the question be put before Marin County Voters
- Civic leaders and Fire Chiefs campaigned Cities/Town Councils/Fire Districts for formation of a JPA to be funded by 1% parcel tax-17 of 19 towns agreed
- **Measure C – Marin Wildfire Prevention Authority received 70.8% voters' support**

2018–2019 MARIN COUNTY CIVIL GRAND JURY

## Wildfire Preparedness A New Approach

Report Date: April 18, 2019

Public Release Date: April 25, 2019



# 2020-Marin Wildfire Prevention Authority Programs/Investments

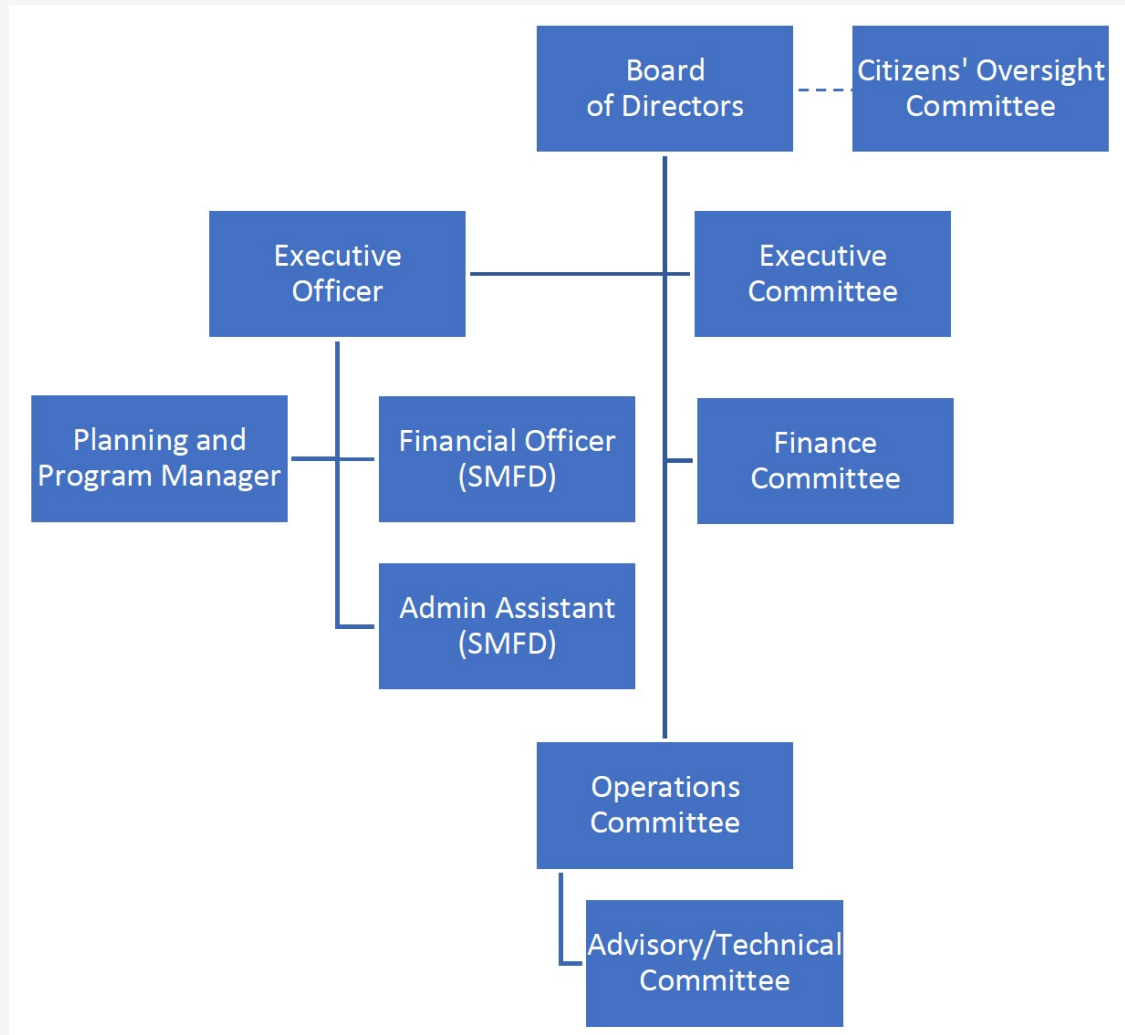
- MWPA is a 17 Member JPA
- 10 year term - \$20 MM per year
- Wildfire Detection/Evacuation planning and improvements
- Vegetation Management
- Public Education – FIRESafe Marin
- Defensible Space, Home Hardening
- Evacuations Route Improvements

Program Area			% of Funds
JPA Core	Wildfire Detection & Evacuation Program Improvements		60%
	Vegetation Management / Fire hazard reduction		
	Grants Management		
	Public Education – FIRESafe Marin		
<b>Defensible Space Evaluations – Home Hardening</b> With the ability for an agency to administer vs JPA			20%
<b>Community Level Wildfire Prevention Mitigation</b> Local jurisdiction fire prevention issues with no funding Enhanced fire patrols for problem areas, additional fire hazard reduction work, evac route parking issues			20%

# 2021-Marine Wildfire Prevention Authority Programs/Investments

%	Agency	Projected Revenue	OPS AREA	Area %	Core minus Admin	D-Space 20%	Local 20%
5.29%	City of Larkspur	\$1,041,443				\$208,289	\$208,289
3.36%	Kentfield Fire District	\$662,503				\$132,501	\$132,501
1.15%	Sleepy Hollow Fire District	\$227,224				\$45,445	\$45,445
4.16%	Town of Corte Madera	\$818,649				\$163,730	\$163,730
2.49%	Town of Fairfax	\$490,183				\$98,037	\$98,037
1.38%	Town of Ross	\$270,824				\$54,165	\$54,165
4.65%	Town of San Anselmo	\$915,777	<b>CENTRAL MARIN</b>	22.43%	<b>\$2,385,105.53</b>	\$183,155	\$183,155
0.61%	Bolinas Fire District	\$119,529				\$23,906	\$23,906
8.29%	County of Marin Fire*	\$1,632,405				\$326,481	\$326,481
0.52%	Inverness Fire District	\$101,676				\$20,335	\$20,335
0.68%	Stinson Beach Fire District	\$133,722	<b>WEST MARIN</b>	5.97%	<b>\$635,314.10</b>	\$26,744	\$26,744
24.54%	Novato Fire District	\$4,833,323	<b>NOVATO</b>	24.17%	<b>\$2,570,535.81</b>	\$966,665	\$966,665
23.63%	City of San Rafael	\$4,653,581				\$930,716	\$930,716
1.67%	Marinwood CSD	\$328,228	<b>SAN RAFAEL</b>	28.89%	<b>\$3,072,613.55</b>	\$65,646	\$65,646
6.03%	City of Mill Valley	\$1,187,728				\$237,546	\$237,546
0.15%	Muir Beach CSD	\$30,351				\$6,070	\$6,070
11.42%	Southern Marin Fire District	\$2,248,673	<b>SOUTHERN MARIN</b>	18.54%	<b>\$1,971,477.09</b>	\$449,735	\$449,735
<b>Total</b>		<b>\$19,695,819</b>		<b>100%</b>	<b>\$10,635,046.08</b>	<b>\$3,939,164</b>	<b>\$3,939,164</b>

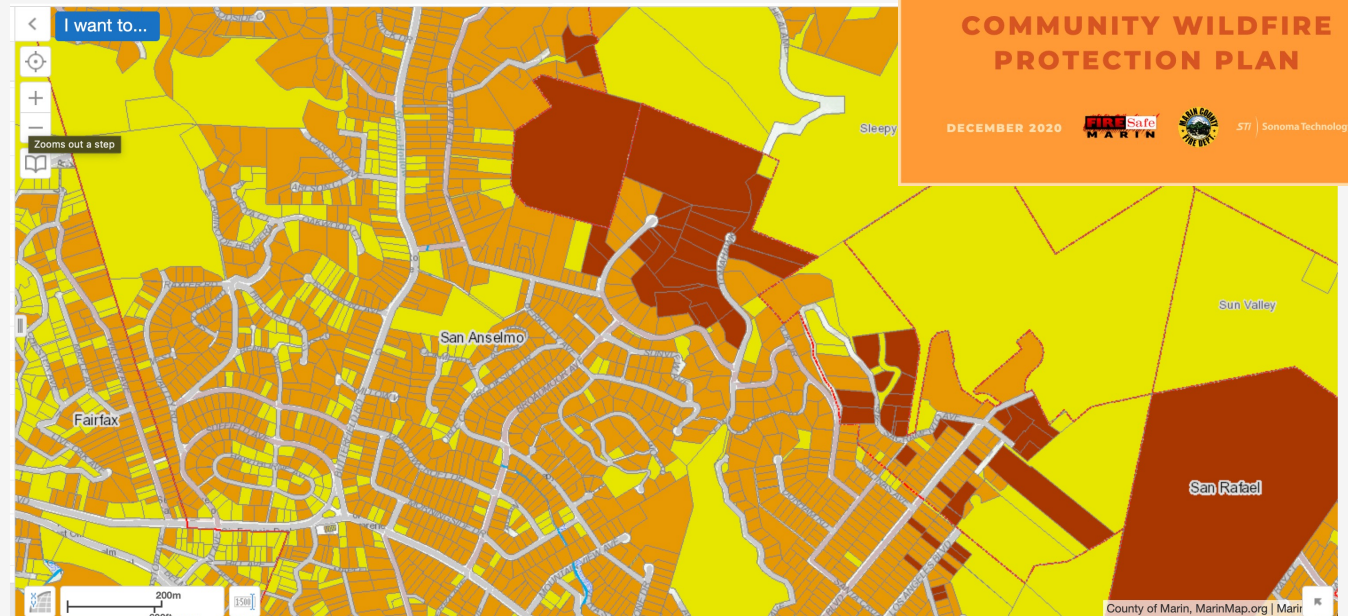
# MWPA ORGANIZATION and FUNDAMENTALS



- A **Joint Powers Agreement** clearly defines the JPAs authorities to operate, act and invest in wildfire prevention activities
- Voting structure allows for a coordinated approach while preserving local control
- Operated "**From the Ground Up**"
- All sub committees' actions are defined by written **Bylaws**
- All Actions and Investments are **monitored by a Citizens' Oversight Committee**

# Marin County Community Wildfire Prevention Plan

- **Marin County CWPP** updated 2021 **provides the framework for MWPA's annual work plans and investments**
- Used up to date LiDAR data funded by a 2019 federal grant
- Conducted a **Fire Risk Assessment for every parcel and home** in Marin
- Identifies **critical hazards & investments needed to reduce risks**



# What We Need

---

- **Support of the Environmental Community** and key partners to implement critical projects
- There is not getting around environmental compliance – and there shouldn't be.
- Partnerships with the environmental community and a commitment to ecologically sound practices is vital.



## **ECOLOGICALLY SOUND PRACTICES FOR VEGETATION MANAGEMENT**

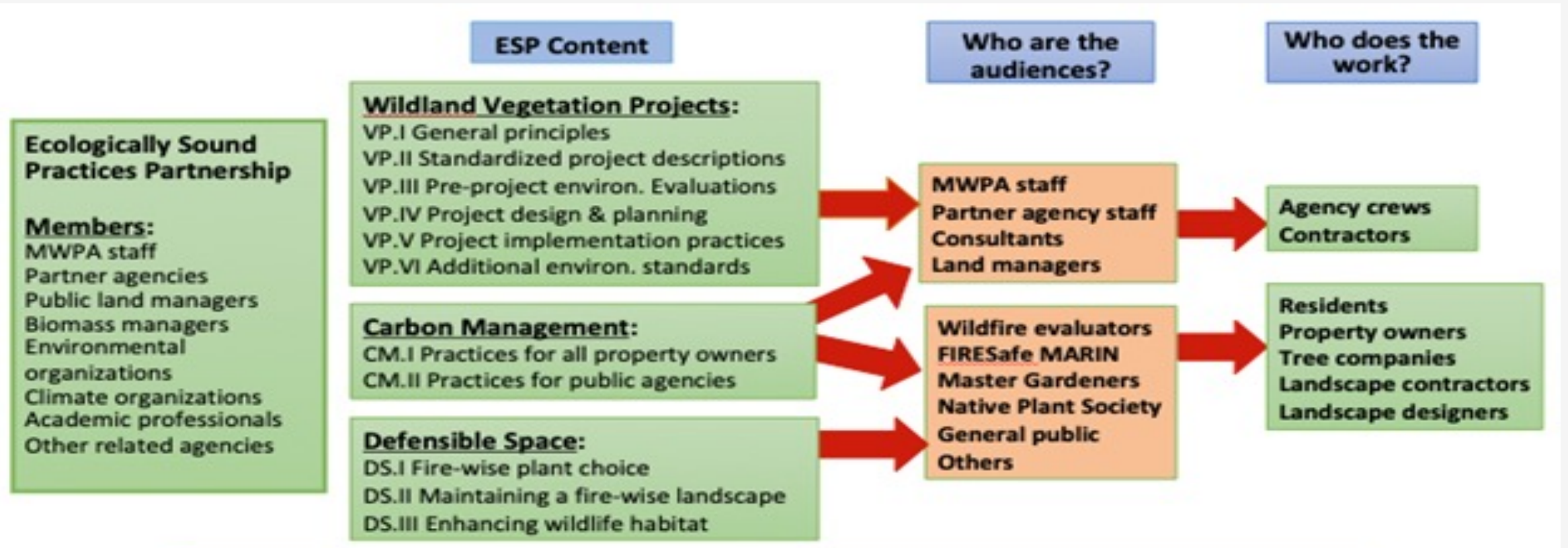


Marin Wildfire Prevention Authority  
ESP Partnership

# Environmentally Sound Practices Partnership

## ECOLOGICALLY SOUND PRACTICES OVERVIEW

Marin Wildfire Prevention Authority / ESP Partnership



# What We Need

---

**Residents to take personal responsibility to be informed, prepared and to reduce hazards around their homes**

**Good luck and the time necessary to substantially reduce hazards**



## SUMMARY- 2020/22 Priorities

---

- **Strategic Planning** with **Goals, Objectives, Metrics and Monitoring**
- Aggressive **Public Education Program**- FIRESafe MARIN
- **Home hardening**
- **D Space Clearing** supported by **chipper days**
- County Wide **Evacuation Route Hazard Assessment and Clearing**
- **Fuel reduction** projects in open spaces **near homes**
- **Shaded fuel breaks** along the WUI boundary
- Efficient Environmental Compliance included throughout the process.

# Now Do We Generate Momentum?

---

- **Identify what the public really wants**
- **Elected and Appointed Officials at the Federal, State and Local Levels**
- **Community change leaders**
- **Fire Chiefs, Fire Safe Sonoma**
- **Enironmental activists, UC Continuing Education**



**MARIN WILDFIRE  
PREVENTION AUTHORITY**

Thank You!

Mark Brown

Executive Officer

Marin Wildfire Prevention Authority

[mbrown@marinwildfire.org](mailto:mbrown@marinwildfire.org)

415-246-0280