

FIRE SAFE SONOMA

WHO WE ARE
PARTNERS!

25 YEARS STRONG

BOARD

ROBERTA MACINTYRE

VERN LOSH
LINDA COLLISTER
KEN HITE

PAUL LOWENTHAL STEVE MOSIORCHAK
MARSHALL TURBEVILLE TARA CORNELISSE
GEOFF PETERS MOLLY CURLEY O'BRYEN

MISSION

WILDLAND FIRE EDUCATION & RISK REDUCTION

VALUES

CARE

CARE FOR COMMUNITY / CARE FOR ENVIRONMENT

STAFF

- MARIKA RAMSDEN - EC, PAID
- MASON INUMERABLE - AmeriCorps Fellow, PAID
- NOEL CLAB - VOLUNTEER, NOT PAID
- ESTHER MANDENO - CONTRACT GIS
- ETHAN FOOTE - PT / CONTRACT CONSULTING

FIRE SAFE SONOMA

WHAT WE HAVE
BEEN DOING +
NOW DOING

PROJECTS

CURRENT (IN PAST 2 YEARS)

T.P.W. WEST COUNTY \$124K

READY SET GO! \$50K

TOOL TRAILER TRAILER+ \$10K

LIVING WITH FIRE - \$3K ?

WILDLAND FIRE ASSESSMENT PROJECT \$37K

4 ORGS & RISK ASSESSMENT \$100K

GUERNEVILLE FSC (STARTUP) \$2K

SPRINGS MAC (SPANISH) \$5K

GEHRICKE RD ROADSIDE FUEL REDUCTION \$175K

SAFER WEST COUNTY PHASE 1 \$1.1 MIL

TALS-EIR \$175K

COUNTY DA PROJECT \$5 MIL

C.F.F. SPANISH TRANSLATION \$15K

(\$1 MIL ANNUALLY)
5 YEARS
SUSTAINABILITY?

BEEN DOING

ROADSIDE HAZARD REDUCTION MODEL

WORK w/ COMMUNITY

COUNTY TPW - HUGE MATCH

USE LOCAL CREWS - CONB / CENSVILLE / CROWN RIDERS

BIGGEST CHALLENGE IS TRAFFIC CONTROL

GOALS

- IMPROVE EVAC
- SLOW FIRE DOWN

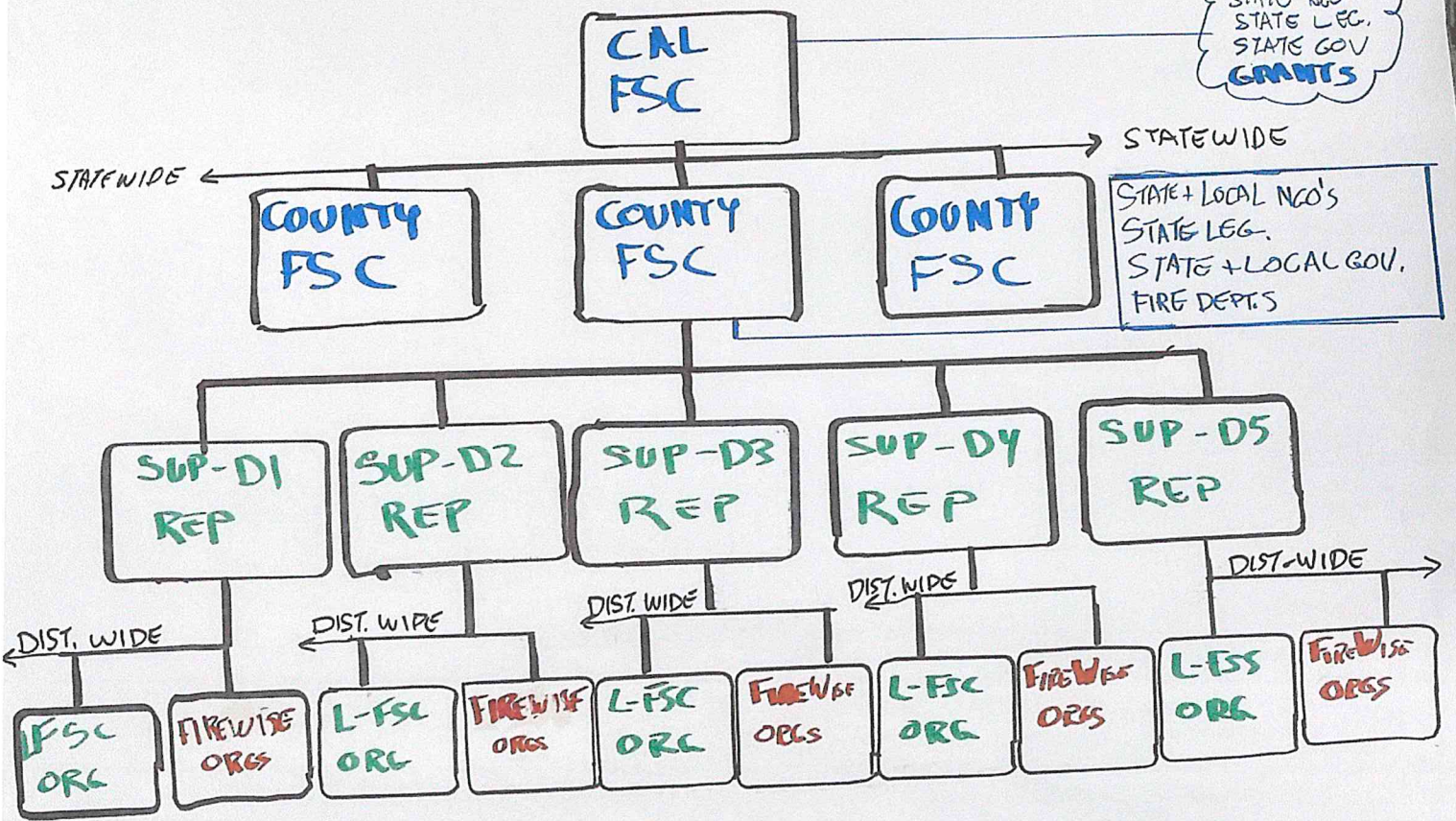
EXPERIENCED 5 TIMES

FITCH
GROVE ST
WEST COUNTY X3

FUTURE ! ?

WILL BE DOING
ESTABLISH LEADERSHIP
MOBILE COMMUNITIES
COMBINED EFFORT = SCALE

STATE NGO'S
STATE LEG.
STATE GOV
GRANTS



FIREWISE COMMUNITIES !

NOT DIFFICULT
LIKE LOCAL CWFP
INCENTIVES

0 TO 2500 HOMES
R.A. SIMILAR TO FSS 2008 MODEL
REQUIREMENTS TO STAY CURRENT w/ NFPA



Your Countywide Fire Safe Council

About Fire Safe Sonoma



Fire Safe Sonoma is a 501(c)(3) non-profit and is the lead Fire Safe Council for Sonoma County. Fire Safe Sonoma has been educating residents about wildfire prevention and safety for nearly 25 years, taking on large scale fuels reduction projects, and assisting local community groups with wildland fire risk reduction. Although Fire Safe Sonoma receives some donations, the efforts of the organization are primarily grant funded.

Fire Safe Sonoma routinely acts as a liaison between local communities and agencies, and is constantly seeking grant funding for wildfire safety related projects. The organization also acts as a fiscal sponsor for projects across the County.

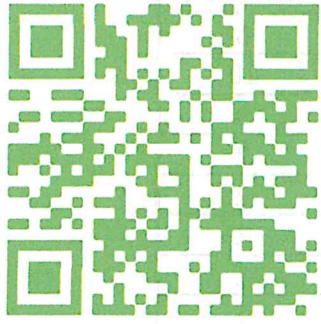
Fire Safe Sonoma Firsts: Fire Safe Sonoma created the first, locally tailored, wildfire safety publication, "Living with Fire In Sonoma County"; they drafted Sonoma County's first countywide Community Wildfire Protection Plan (CWPP) in 2015, and they created the first Curbside Chipper program in Sonoma County (Fire Safe Sonoma does not currently provide curbside chipping).



Visit Fire Safe Sonoma to learn more!

www.FireSafeSonoma.org





FireSAFE

SONOMA

If you have the time,
we have the tools...



For information on how to borrow this resource contact
Fire Safe Sonoma at firesafesonomaec@gmail.com

Listos Tool Trailer inventory (7-19-22)

| ITEM | DESCRIPTION | NUMBER |
|--------------------------------|---------------------------------------|---------------|
| Safety glases | ANTI-FOG LENS | 8 |
| Hard-hats | CAP STYLE HARD HATS | 10 |
| Ear muffs | TRPX 29 EARMUFF | 9 |
| Ear plugs | PURA-FIT, Uncorded (100) | 2 |
| Trimmer line | Stihl pentagon line (984 ft spool) | 2 |
| Leaf blower | Stihl BR 450 | 1 |
| Carbide chain - 16 inch | Stihl - spare | 1 |
| Chain saw (by special request) | Stihl MS 251 | 1 |
| Loppers | Fiskars Power gear 2 | 5 |
| Pole pruner | Stihl HT 56 C-E | 1 |
| Pole pruner | Fiskars 16ft manual | 2 |
| Weed eater | Stihl FS 91 R | 2 |
| First aid kit | 16 UNIT POLY FIRST AID KIT | 1 |
| Fire Extinguisher | | 1 |
| Traffic cones | 18" Economy Traffic Cones | 24 |
| Traffic sign | Customized Roll Up Construction Signs | 2 |
| Traffic sign stand | Bone Springless Sign Stand | 2 |
| Water jug | 5 Gallon Seat Top Water Jug | 1 |
| Rake | leaf | 2 |
| Rake | bow | 2 |
| Broom | 24 in. Indoor/Outdoor Push Broom | 1 |
| Traffic vests | 5 POINT BREAK AWAY VEST | 15 |
| Bar Oil | Gallon | 1 |
| Fuel - oil mix | Stihl MotoMix (Gallon) | 5 |
| Gloves | | 18 |
| Wheel chocks | | 2 |
| Trash Cans | Brute 40 Gal | 2 |
| Tarps | 11' x 15' | 2 |
| Weed Wrench | Large | 1 |
| Weed Wrench | Small | 1 |
| Samuari Saws | | 4 |
| Hand trimmer | | 3 |
| Scoop Shovel | | 1 |
| Square Transfer Shovel | | 2 |
| Pointed Shovel | | 2 |
| USFS McLeod | Fire Tool | 2 |



Your Countywide Fire Safe Council

Our Partners

Fire Safe Sonoma could not have achieved the many accomplishments it has without the help of our partner entities.



CAL FIRE Foresters and Firefighters

CAL FIRE foresters and firefighters at the Region, Unit, Division, and Battalion levels have been extremely helpful in the development and planning of fire safe projects. While during the fire season there may be limited staff availability at all levels, during the winter months CAL FIRE staff is a great resource for Fire safe Sonoma.

Santa Rosa Fire Department

In recent years, the Santa Rosa Fire Department has become a major partner with Fire Safe Sonoma. The SRFD is spearheading the re-write of our iconic publication, Living With Fire in Sonoma County, as well as providing office space for Fire Safe Sonoma Staff.

Sonoma County Board of Supervisors

The County of Sonoma has been helpful to Fire Safe Sonoma since its creation. We have worked collaboratively with the County on many projects and programs.

Sonoma County, Permit Sonoma - Fire Prevention Division

The County of Sonoma, in particular Permit Sonoma - Fire Prevention Division, has been a stakeholder in Fire Safe Sonoma since its creation. We have worked collaboratively with "County Fire" on many projects and programs. County Fire has long been an advocate for Fire Safe Sonoma and has proved to be a fantastic resource for us and that relationship grows stronger every day.

Sonoma county Fire Chief's Association/Fire Prevention Officer's Association

Our local fire agencies are concerned about wildland fire risks in their response areas, and will be pleased to know that residents in their area are attempting to make their homes more fire safe. Local fire departments have a very clear understanding of issues in area neighborhoods and sharing information with local agencies is mutually beneficial. Give your local fire department a call or attend their special events and get to know them.

The California Fire Safe Council

The statewide California Fire Safe Council (CFSC), is a nonprofit organization and member of the California Fire Alliance, and consists of public and private organizations. The CFSC's

mission is to preserve and enhance California's human made and natural resources by fostering wildfire protection. The CFSC accomplishes its mission through public education programs and by funding local fire safety projects. Fire Safe Sonoma has worked closely with the CSFC in recent years and the CFSC has funded several projects for Fire Safe Sonoma.

The Sonoma Ecology Center

Sonoma Ecology Center (SEC) is a local non-profit with the vision of people, land, water, and wildlife thriving together. The SEC works to address challenges related to water supply and quality, open space, rural character, biodiversity, energy, climate change, and a better quality of life for all residents. Their mission is to work with our community to identify and lead actions that achieve and sustain ecological health in Sonoma Valley, however, their efforts are felt countywide and beyond.

Sonoma and Goldridge Resource Conservation Districts

The Sonoma and Goldridge RCD's are grassroots conservation organizations that identify local conservation problems and guides solutions on a voluntary basis. The RCD's mission is to empower and partner with landowners and the community to address Sonoma County's most pressing natural resource concerns. The relationships with the communities they serve are crucial to how they accomplish their work on agricultural, rural and urban landscapes.

Conservation Corps North Bay

CCNB is the oldest local nonprofit youth conservation corps in the country. Serving Marin and Sonoma Counties since 1982, CCNB has helped thousands of young people achieve their goals through education and job skills, while serving the environment and community. CCNB has provided funding as well as staff to assist in several roadside hazard reduction projects in Sonoma County championed by Fire Safe Sonoma.

Other Fire Safe Councils

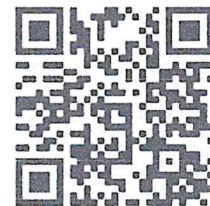
Fire Safe Sonoma works very closely and supports several local Fire Safe Councils in the county who are making great strides in increasing local awareness of wildfire issues, and they serve to focus attention on issues in their area. The formation of local fire safe councils across the county will be tremendously helpful in coordinating projects and several communities have expressed an interest in forming one. If you are interested in forming a Fire Safe Council in your neighborhood, please contact Fire Safe Sonoma.

Pacific Gas and Electric Company

PG&E must inspect all the power transmission lines in the county yearly and maintain them clear of vegetation. PG&E is committed to reducing the number of outages and wildfires caused by vegetation. PG&E is always ready and willing to provide grant funds to organizations like Fire Safe Sonoma for vegetation management and educational projects.

Visit Fire Safe Sonoma to learn more!

www.FireSafeSonoma.org



Garden as if Life Depends on It!

Home landscapes provide many critical ecosystem services including:

- Food, shelter, and other habitat resources for many species of birds, pollinators, and other wildlife.



- Nurturing soil by protecting it from erosion and feeding soil organisms with leaf litter. Healthy soil allows vigorous root growth, nutrient cycling, and water absorption.



- Water filtration and conservation with detention basins to collect stormwater and allow it to sink into the soil.



Credit: April Owens

The goal of the Resilient Landscapes Coalition is to encourage fire-wise landscape design and management in the defensible space zone, while at the same time enhancing biodiversity and wildlife habitat, and conserving resources.

The Coalition formed for several reasons:

- To ensure that wildlife habitat and biodiversity are protected and enhanced while meeting County and State code requirements and fire-wise recommendations within the defensible space zone.
- To promote sustainable practices to save energy and water.
- To provide specific design and plant selection recommendations at different distances from the house, encouraging the use of native plants, and identifying native plant communities as the framework for plant selection.
- To highlight the importance of working as a community to be fire-wise, sustainable, and to protect and enhance wildlife habitat.
- To engage the fire-protection community along with the environmental communities to create an integrated and holistic message.

THE RESILIENT LANDSCAPES COALITION PARTNERSHIP



VISIT US!



With funding from the Sonoma County Vegetation Management Grant Program



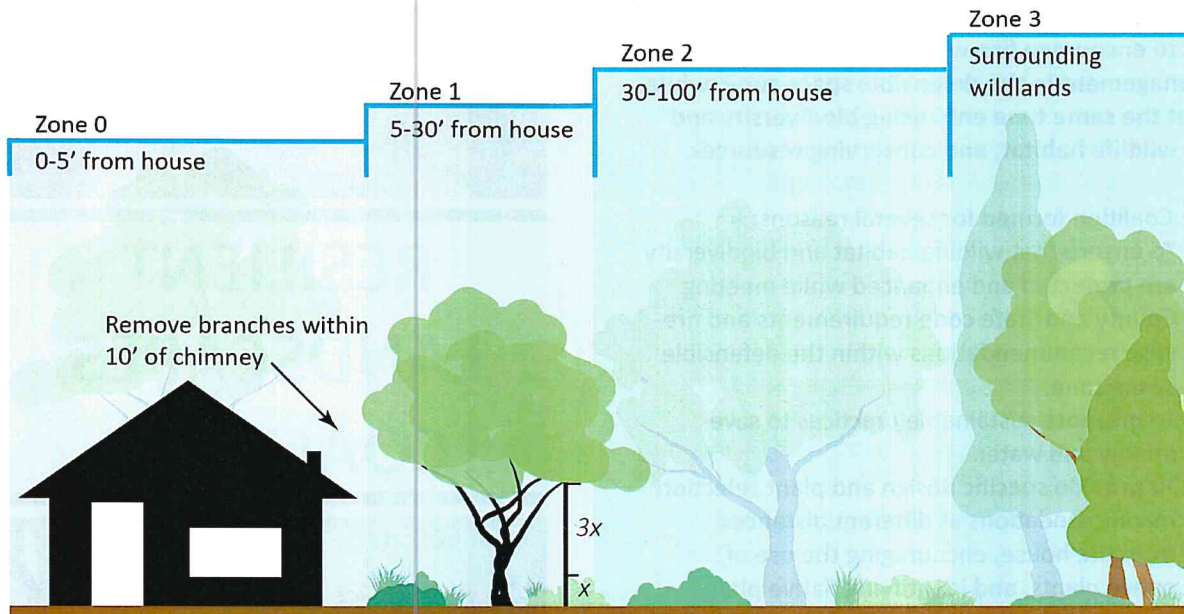
RESILIENT LANDSCAPES COALITION



Credit: April Owens

A GUIDE TO SUSTAINABLE DEFENSIBLE SPACE

SonomaResilientLandscapes.com



Defensible Space Guidelines

- **Harden the home**, as this is the highest priority for protecting your property.
- **Plant in “islands”** to provide habitat.
- **Remove “ladder” fuels** that allow fire to move into the canopies of trees.
- **Hardscape:** non-flammable landscape features made of brick, gravel, or stone.
- **Maintenance is critical and required by law!** Keep plants free of dead material, avoid unnecessary hedging, and maintain plants with adequate irrigation.
- **Work with your neighbors.** Recognize that your Zone 2 may be within their Zone 1.
- **Mow annual grasses and other weeds** to 3-4” in the summer. It’s the law!
- **In Zones 1-2, allow leaf litter** to enrich the soil in winter and spring, but minimize it in Zone 1 in the summer.
- **Avoid “gorilla hair” mulch.** Arbor mulch is a good mulch material where appropriate.

Defensible Space Myths

- **Do we need to have a “moonscape”?** No! Diverse groupings of mostly native plants are beautiful and provide habitat. Native plants are adapted to our climate and much easier to keep hydrated.
- **Do we have to cut down our trees?** No! Trees are important habitat elements, but we need to remove ladder fuels. Maintain a distance to the lowest branches of 3x the height of plants below. Rigorously remove debris from roofs and gutters.
- **What are the best fire resistant plants?** All plants burn. It’s much more important to place plants in the right location and with their ultimate size and requirements in mind. Native plants conserve water and provide habitat.

Zone 0: Since flying embers are the primary cause of structure fires during a wildfire, start your work here!

- Use only non-combustible inorganic mulches such as gravel. This is also a good area for brick or concrete walkways. Replace natural fiber doormats with heavy rubber mats or metal grates.
- Remove combustible materials such as trash containers, lumber and firewood, patio furniture and clutter.
- Vegetation is not recommended within 5’ of a structure. Any plants that do remain should be well maintained and adequately hydrated. Clean up all fallen leaves and needles.
- Overhead trees are fine, but assure that they’re healthy and free of dead wood, and maintain a distance of 5’ from the roof and 10’ from the chimney. Maintaining the roof and gutters free of debris is critical!

Zone 1: Clusters of plants divided by hardscape can slow the path of fire.

- Think “islands” of low, preferably native plants separated by non-combustible materials such as gravel paths, patios, and features utilizing cobble and rock.
- Avoid “ladder fuels”, lower vegetation that allows flames to climb to the canopy of trees and large shrubs. A rule of thumb is to have a distance to the lowest tree branches of 3x the height of the understory plants.
- Utilize arbor mulch to 3” deep in planting areas to help maintain them adequately hydrated and healthy.

Zone 2: Transitioning to the broader landscape, continue to provide horizontal and vertical spacing.

- Larger plants and more extensive plant islands will increase habitat and benefit wildlife.
- Remove flammable invasive plants in all zones.

Zone 3: Practice stewardship of wildlands on your property.

- Adjacent wildlands provide critical habitat for many plants and animals that enrich our lives.
- Don’t modify vegetation without help from an expert.
- Learn to recognize native species and remove invasive exotic plants that tend to be highly flammable.

For more information on Defensible Space ordinances and regulations see: firesafesonoma.org