

Annexation Discussion



June 21, 2021

Northern Sonoma County FPD

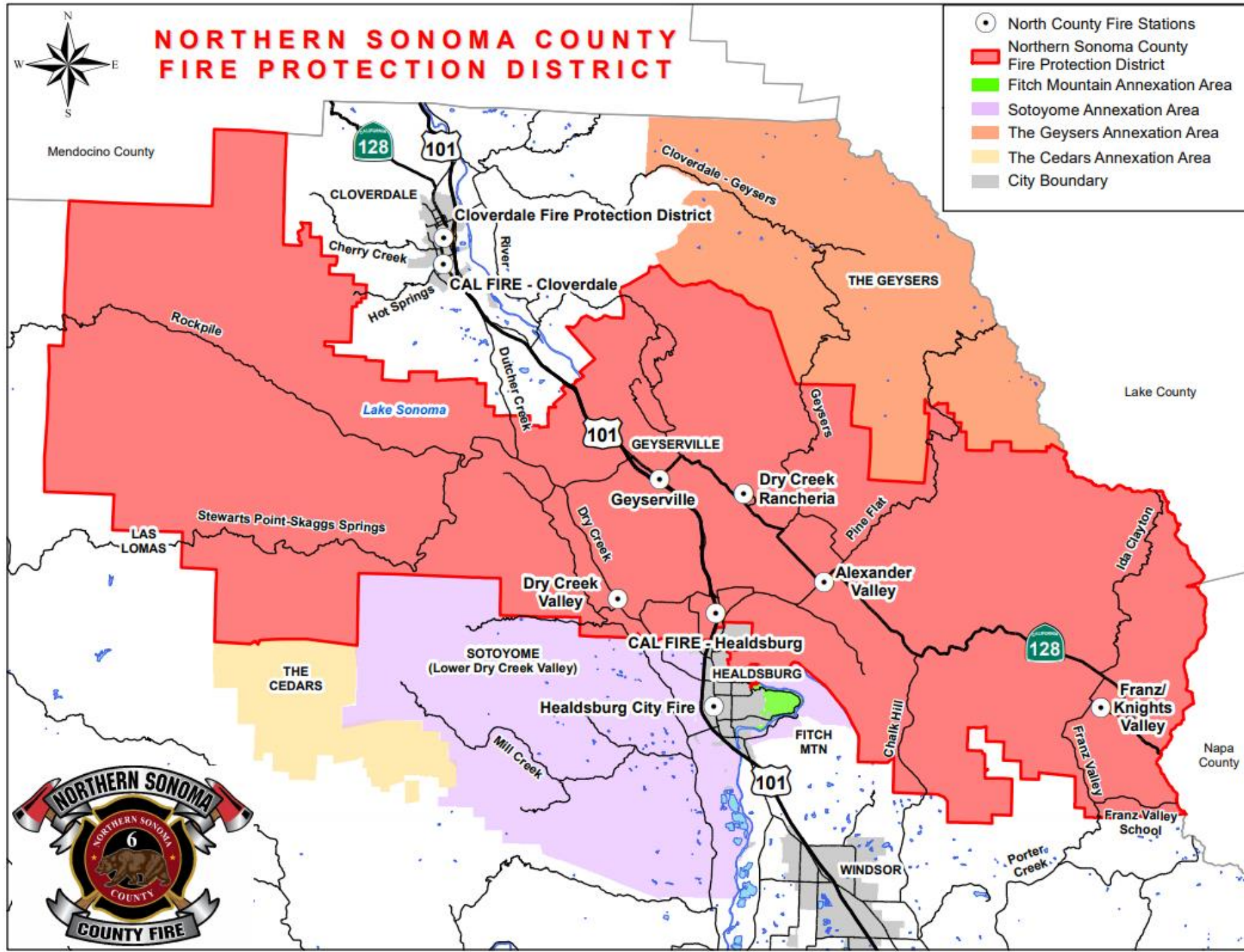
PROGRESS TO DATE

- The Geyserville Fire Protection District annexed Knights Valley in **September 2019** and received 100% of the property tax (ad valorem) generated from the area
- The consolidated district was renamed the Northern Sonoma County Fire Protection District
- The District entered in a joint-powers agreement with the Cloverdale Fire Protection District in **April 2020**
- The District has completed a sphere of influence process for all (CSA 40) including The Geysers, Fitch Mountain, and Sotoyome in **early 2021**
- The District is preparing official maps for the annexation process and is awaiting a tax exchange agreement

WHAT IS
REGION 6?

WHAT IS CSA
40?

WHAT ARE
WE
PLANNING
TO ANNEX?



Tax Exchange Agreement

LAST STEP IN ANNEXATION

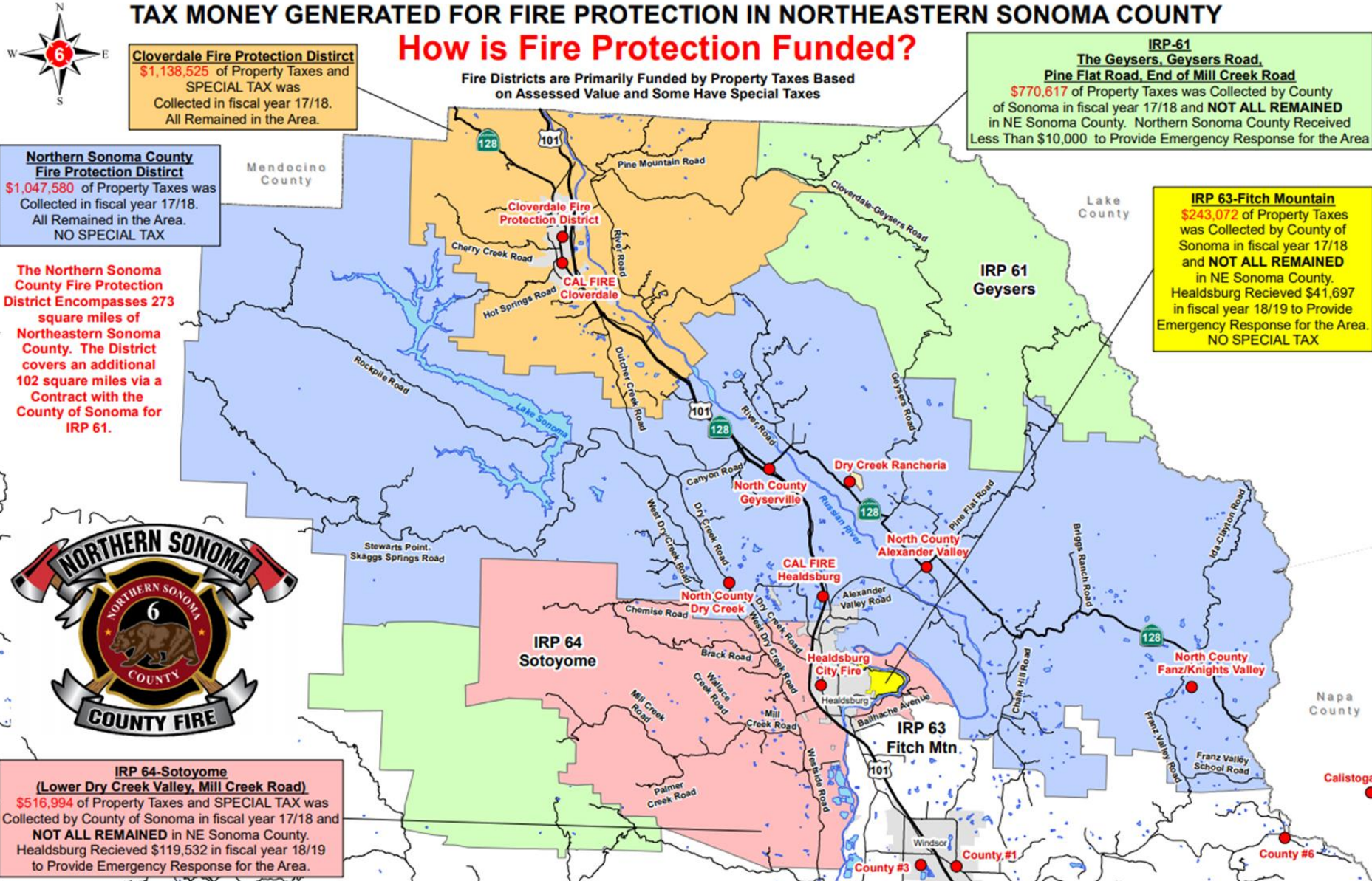
- The District will not complete the annexation/consolidation process of The Geysers, Fitch Mountain, and Sotoyome without receiving 100% of the taxes generated for fire protection in these areas
- This includes property taxes (ad valorem), special parcel taxes (Mello Roos), and special taxes for (geothermal) electricity generation (Chapter 12, Article VII of County Ordinances)
- The District understands that no other fire district has been allocated less than 100% of the property tax allocation when annexing an area

HOW MUCH MONEY IS GENERATED IN THE NORTH COUNTY?

TAX MONEY GENERATED FOR FIRE PROTECTION IN NORTHEASTERN SONOMA COUNTY

How is Fire Protection Funded?

Fire Districts are Primarily Funded by Property Taxes Based on Assessed Value and Some Have Special Taxes



Cloverdale Fire Protection District
 \$1,138,525 of Property Taxes and SPECIAL TAX was Collected in fiscal year 17/18. All Remained in the Area.

IRP-61
 The Geysers, Geysers Road, Pine Flat Road, End of Mill Creek Road
 \$770,617 of Property Taxes was Collected by County of Sonoma in fiscal year 17/18 and **NOT ALL REMAINED** in NE Sonoma County. Northern Sonoma County Received Less Than \$10,000 to Provide Emergency Response for the Area

Northern Sonoma County Fire Protection District
 \$1,047,580 of Property Taxes was Collected in fiscal year 17/18. All Remained in the Area. NO SPECIAL TAX

IRP 63-Fitch Mountain
 \$243,072 of Property Taxes was Collected by County of Sonoma in fiscal year 17/18 and **NOT ALL REMAINED** in NE Sonoma County. Healdsburg Received \$41,697 in fiscal year 18/19 to Provide Emergency Response for the Area. NO SPECIAL TAX

The Northern Sonoma County Fire Protection District Encompasses 273 square miles of Northeastern Sonoma County. The District covers an additional 102 square miles via a Contract with the County of Sonoma for IRP 61.



IRP 64-Sotoyome (Lower Dry Creek Valley, Mill Creek Road)
 \$516,994 of Property Taxes and SPECIAL TAX was Collected by County of Sonoma in fiscal year 17/18 and **NOT ALL REMAINED** in NE Sonoma County. Healdsburg Received \$119,532 in fiscal year 18/19 to Provide Emergency Response for the Area.

County #3 County #1 County #6

Annexation Areas Funding Analysis

Fire Protection Service Area	Ad Valorem Taxes FY 2018-19			Special Parcel Taxes FY 2018-19		Total Funding Available	Cost of Service	Service Provider	Funding Exported
	Total Fire Protection TAF	Local Allocation of TAF	Note	Special Parcel Taxes	Note				
Cloverdale FPD	\$ 619,794	\$ 619,794	100%	\$ 518,730	General fire protection services	\$ 1,138,524	\$ 1,138,524	CFPD	\$ -
Northern Sonoma County FPD	\$ 1,047,560	\$1,047,560	100%	\$ -	No Special Taxes	\$ 1,047,560	\$ 1,047,560	NSCFPD	\$ -
Knights Valley (recently annexed)	\$ -	\$ -	100%	\$ -	No Special Taxes	\$ -	\$ -	NSCFPD	\$ -
IRP- 61 Geysers	\$ 770,617	\$ -	Reimbursement for emergency response calls	\$ -	No Special Taxes	\$ 770,617	\$ 10,000	EMR Contract with NCFPD	\$ 770,617
IRP 63 Fitch Mountain	\$ 243,072	\$ -	0%	\$ -	No Special Taxes	\$ 243,072	\$ 41,697	Contract with HFD	\$ 201,375
IRP 64 Sotoyome	\$ 408,819	\$ -	0%	\$ 108,175	CFD for fire protection services	\$ 516,994	\$ 119,532	Contract with HFD	\$ 397,462
Total Region 6	\$ 3,089,862	\$1,667,354		\$ 626,905		\$ 3,716,767	\$ 2,357,313		\$1,369,454

Northern Sonoma County Fire District

HOW DO WE PLAN TO USE THE MONEY?

- Expand vegetation management and other wildfire hazard reduction efforts to protect rural, WUI, and urban areas from devastating wildfires and related impacts, including beyond its southern border
- Support community-based fire risk reduction and resilience efforts (COPE, FireSafe Councils, CERT, etc.)
- Protect key industries including wineries, vineyards, tourism, and lodging from the devastating effects of wildfires
- Protect critical infrastructure serving the Region including major highways, water supply, transmission lines, telecommunications equipment, and the geothermal power plants and facilities

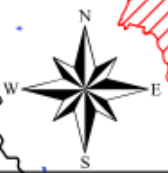
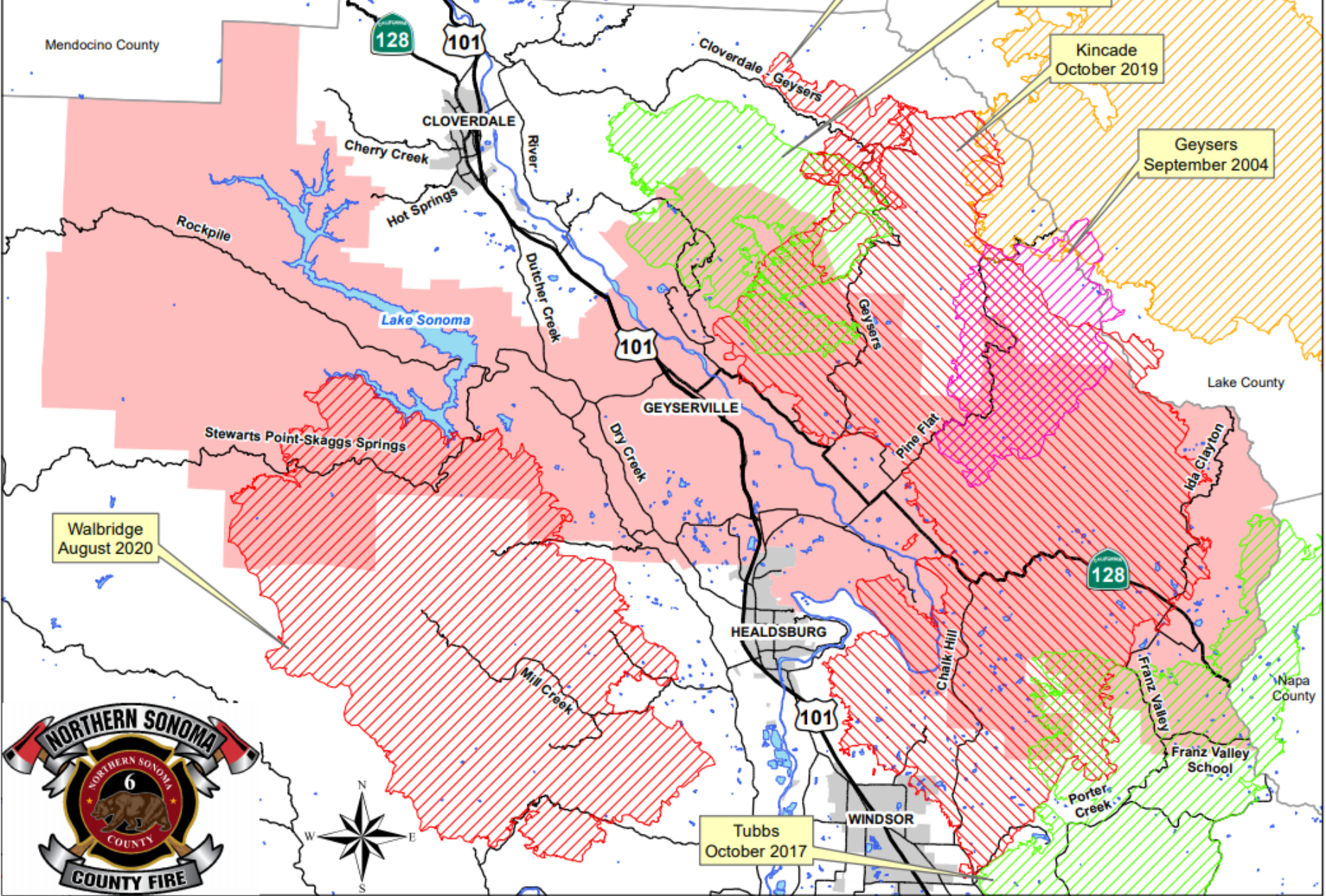
Northern Sonoma County Fire District

WILDLAND FIRES ARE A GAME CHANGER

- Increased wildfire frequency, size, and intensity place the North County and the remainder of the County at risk
- In recent years, more structures are burning in the North County, and likely the County, from wildfires than structure fires
- The District has no other option for altering the negative effects of future wildfires than to focus on prevention and preparedness
- Future wildfires and related losses can be reduced by concerted and sustained fire prevention and vegetation management efforts that have been already initiated by the District including prescribed burning
- Response times, even with additional resources, will remain lengthy and future wildfire's rate of spread will continue to outpace even the most robust response of air and ground-based resources.

NORTHERN SONOMA COUNTY FIRE PROTECTION DISTRICT

Large Fire History Since 2000



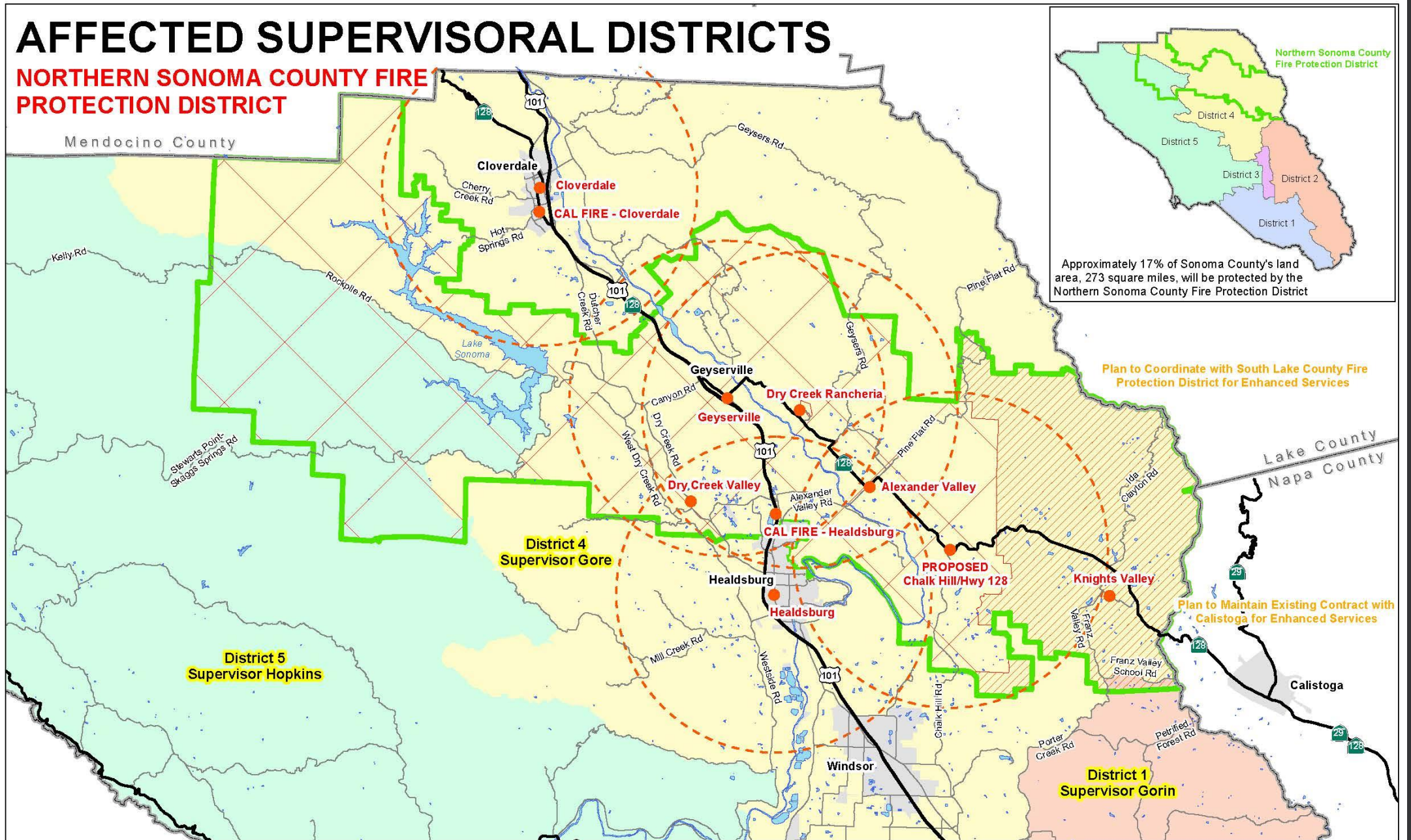
Northern Sonoma County Fire District

NEXT STEPS

- Complete tax exchange agreement
- Increase wildfire prevention and preparedness programs
- Maintain contract for services with City of Healdsburg for Fitch Mountain and Sotoyome areas
- Maintain contract services with South Lake County FPD and City of Calistoga for portions of CSA 40 territory annexed
- Consolidate with Cloverdale FPD (Long Term)

AFFECTED SUPERVISORAL DISTRICTS

NORTHERN SONOMA COUNTY FIRE PROTECTION DISTRICT



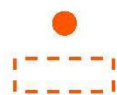
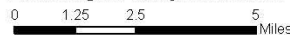
Approximately 17% of Sonoma County's land area, 273 square miles, will be protected by the Northern Sonoma County Fire Protection District

Plan to Coordinate with South Lake County Fire Protection District for Enhanced Services

Plan to Maintain Existing Contract with Calistoga for Enhanced Services



GEYSERVILLE FIRE PROTECTION DISTRICT
2019 Knights Valley Annexation



● Current Fire Station Location with PROPOSED Chalk Hill/Highway 128
○ 5 Mile Radius from Staffed Station

▨ Existing Geyserville Fire Protection District Boundary
▨ Proposed Knights Valley Annexation Area

▭ Planned Northern Sonoma County Fire Protection District Boundary (After Knights Valley Annexation)



Questions & Answers

- We would be happy to answer any questions you may have

