









# CITY OF HEALDSBURG

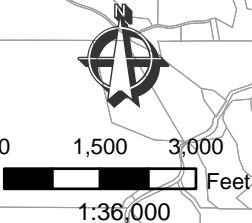
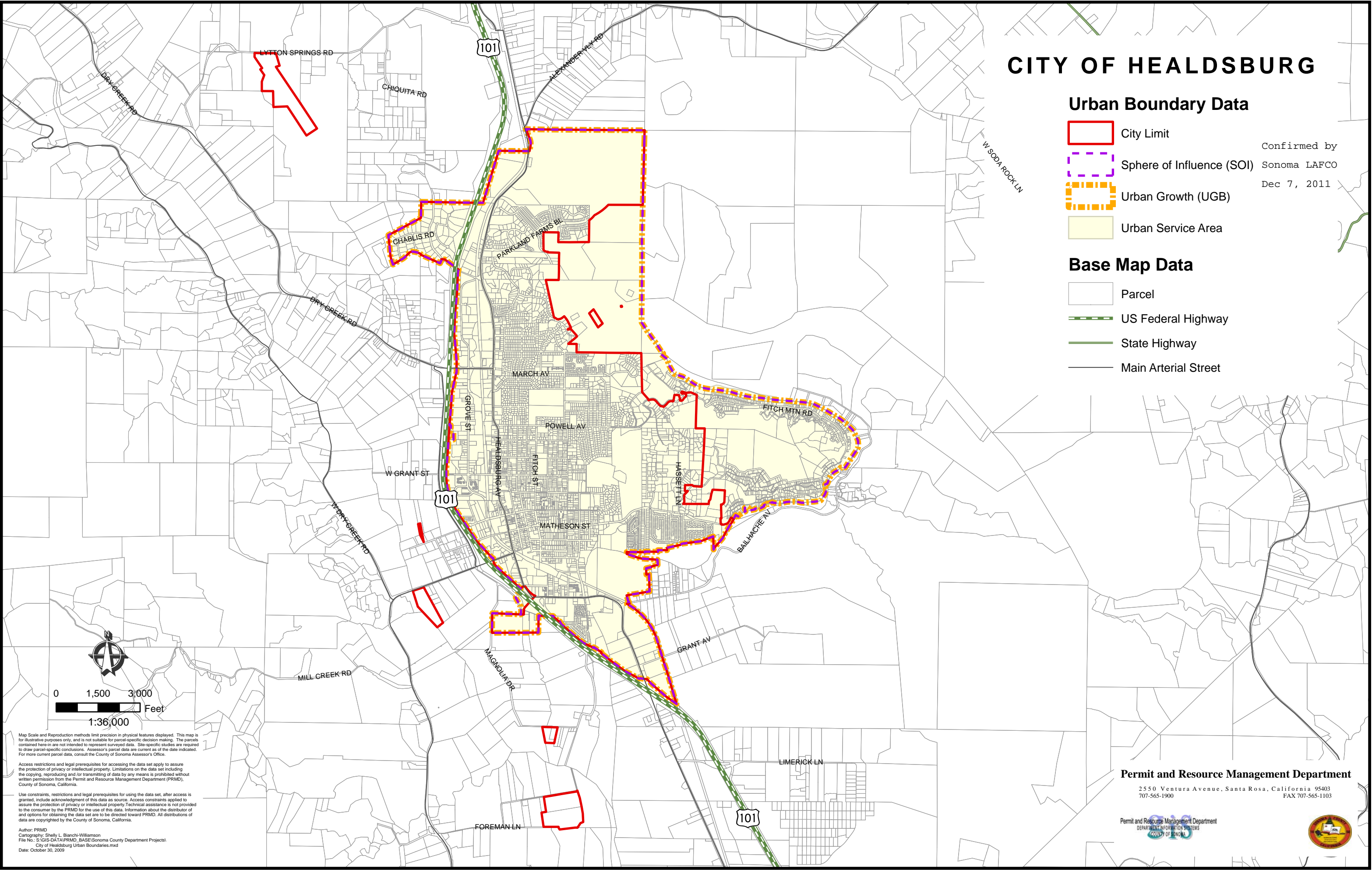
## Urban Boundary Data

-  City Limit
-  Sphere of Influence (SOI)
-  Urban Growth (UGB)
-  Urban Service Area

Confirmed by  
Sonoma LAFCO  
Dec 7, 2011

## Base Map Data

-  Parcel
-  US Federal Highway
-  State Highway
-  Main Arterial Street



Map Scale and Reproduction methods limit precision in physical features displayed. This map is for illustrative purposes only, and is not suitable for parcel-specific decision making. The parcels contained here-in are not intended to represent surveyed data. Site-specific studies are required to draw parcel-specific conclusions. Assessor's parcel data are current as of the date indicated. For more current parcel data, consult the County of Sonoma Assessor's Office.

Access restrictions and legal prerequisites for accessing the data set apply to assure the protection of privacy or intellectual property. Limitations on the data set including the copying, reproducing and/or transmitting of data by any means is prohibited without written permission from the Permit and Resource Management Department (PRMD), County of Sonoma, California.

Use constraints, restrictions and legal prerequisites for using the data set, after access is granted, include acknowledgment of this data as source. Access constraints applied to assure the protection of privacy or intellectual property. Technical assistance is not provided to the consumer by the PRMD for the use of this data. Information about the distributor of and options for obtaining the data set are to be directed toward PRMD. All distributions of data are copyrighted by the County of Sonoma, California.

Author: PRMD  
Cartography: Shelly L. Bianchi-Williamson  
File No.: S:\GIS-DATA\PRMD\_BASE\Sonoma County Department Projects\  
City of Healdsburg Urban Boundaries.mxd  
Date: October 30, 2009

### Permit and Resource Management Department

2550 Ventura Avenue, Santa Rosa, California 95403  
707-565-1900 FAX 707-565-1103

