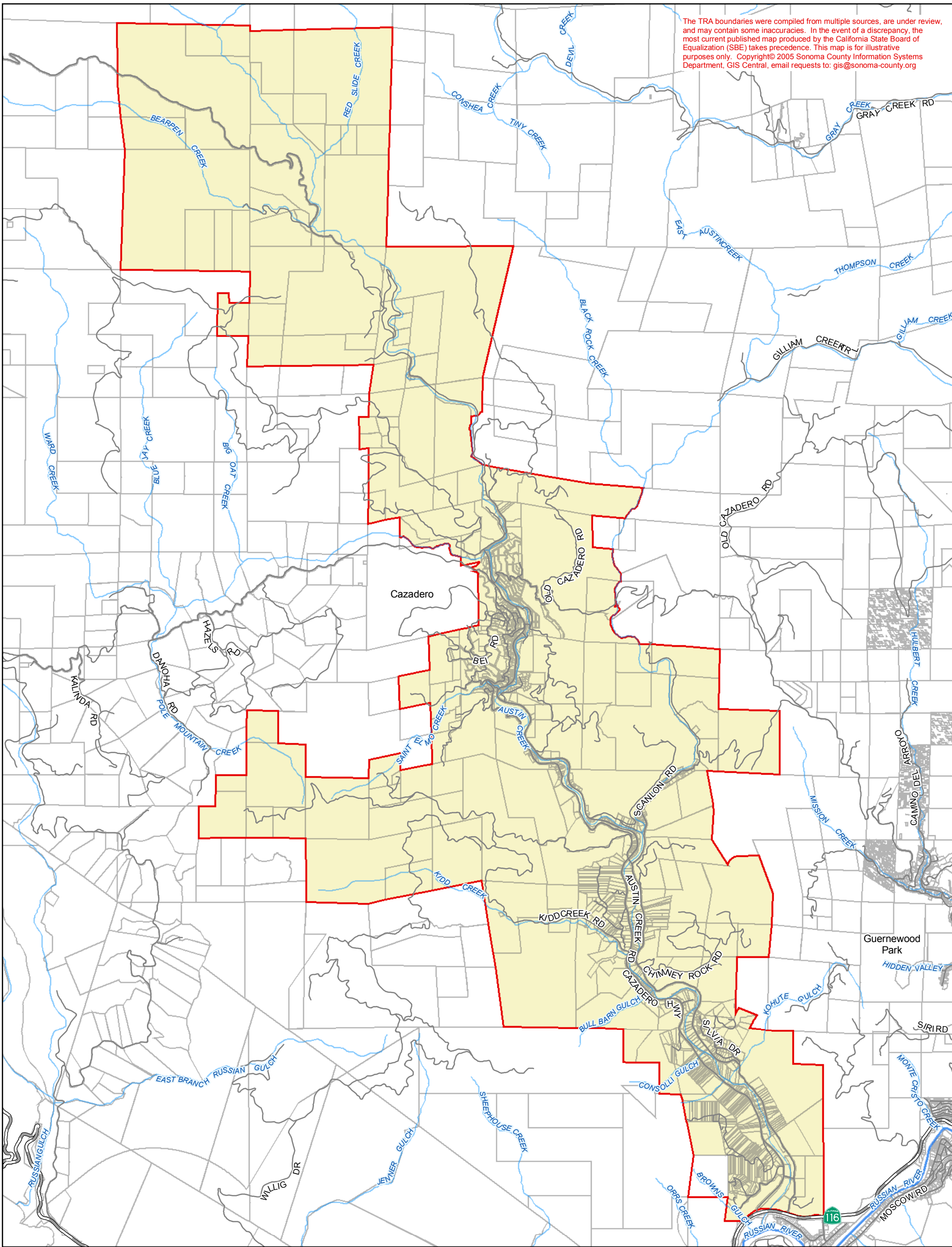




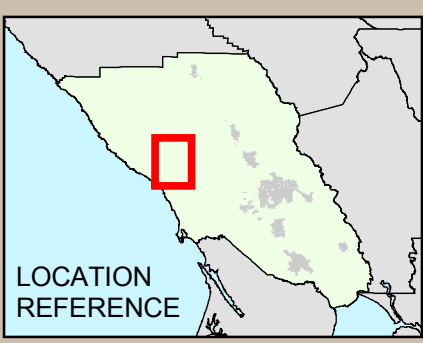
The TRA boundaries were compiled from multiple sources, are under review, and may contain some inaccuracies. In the event of a discrepancy, the most current published map produced by the California State Board of Equalization (SBE) takes precedence. This map is for illustrative purposes only. Copyright © 2005 Sonoma County Information Systems Department, GIS Central, email requests to: [gis@sonoma-county.org](mailto:gis@sonoma-county.org)



0 0.5 1 Miles

### CAZADERO COMMUNITY SERVICES DISTRICT

- CAZADERO COMMUNITY SERVICES DISTRICT (TRA FY 05 - 06)
  - SPHERE OF INFLUENCE
  - COUNTY OF SONOMA GIS PARCELS
  - FREEWAY
  - HIGHWAY
  - STREET
  - RIVER
  - CREEK
- DATE: 11/03/2005



- Author: County of Sonoma Information Systems Department GIS Central
- Projection & Coordinate System Tics: California State Plane Coordinate System, Zone II, NAD 83, US survey feet, Lambert Conformal Conic. Some data have been reprojected from other coordinate systems and may not reflect actual ground positions.
- Document Source and Date: sc-gisdb2\gisdata2\projects\LAFCO\Special District\Fire\CazCommSD\_v9.mxd.
- Data Source: Sonoma County Information Systems Department GIS Central, SBE, Sonoma County Assessor